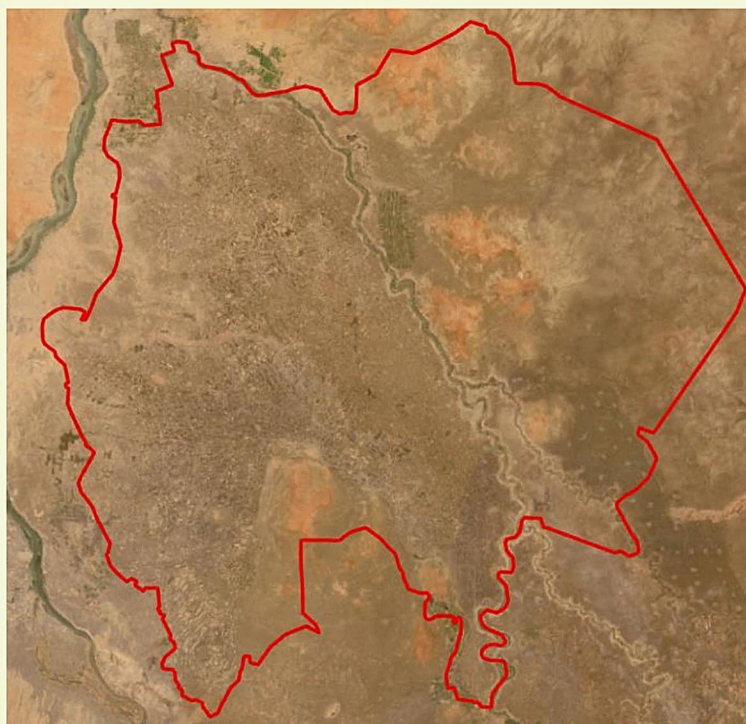
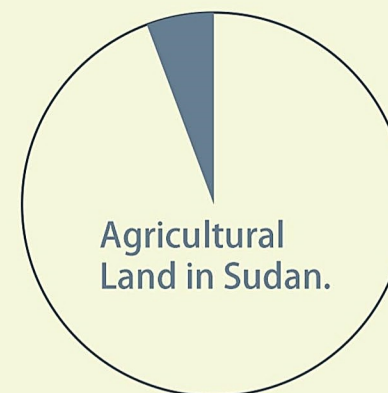


# Agricultural Production Areas in Al-Jazira: Post-Political Unrest and War



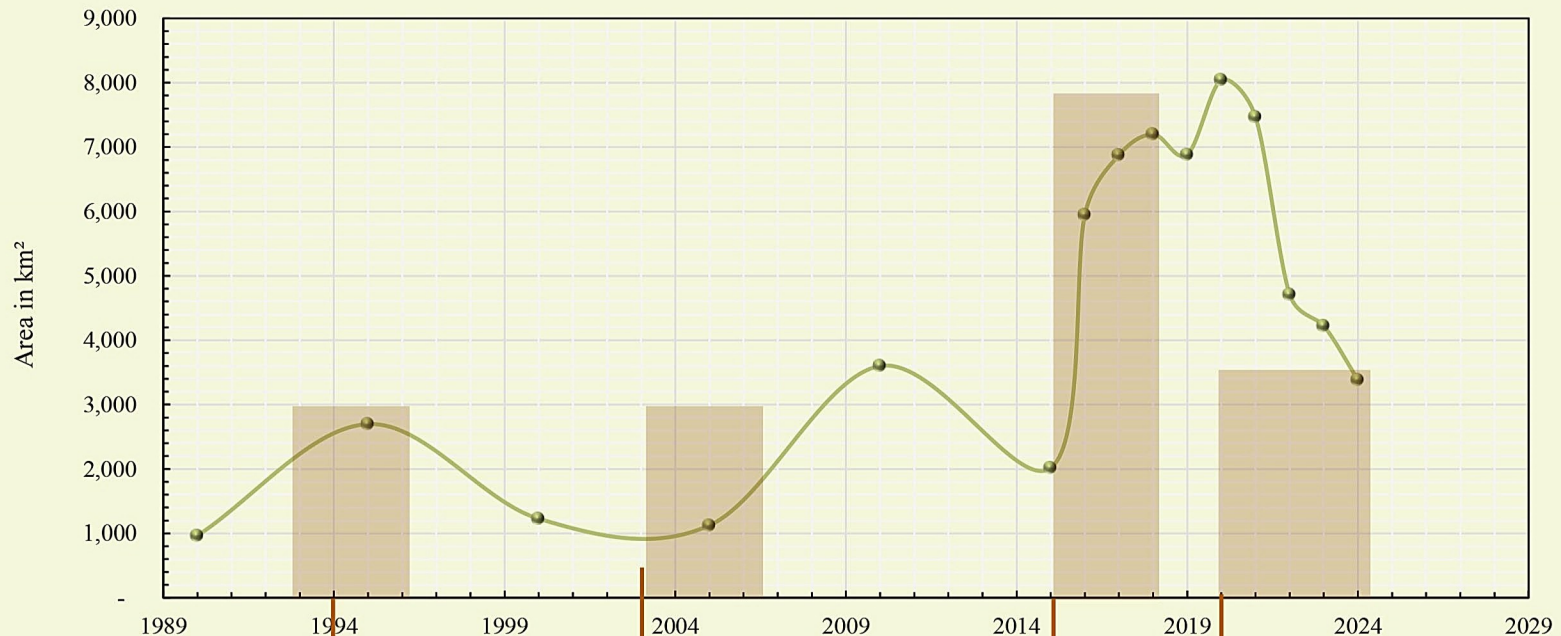
Al-Jazira State is one of the most agricultural states in Sudan, covering approximately 2.2 million feddans of agricultural land out of a total of about 80 million. Consequently, Al-Jazira State represents approximately 2.75% of the total agricultural land in Sudan.

2.2 million feddans.



80 million  
feddans.

### Agricultural Production Areas in Al-Jazira over Time (in km<sup>2</sup>)



1993 - 1996



Political and Climatic Events: In the early 1990s, Sudan experienced a period of relative stability following the end of the First Civil War (1955-1972). Climatic Impact: This period was stable in terms of climate and did not witness severe droughts.

2003 - 2006



Political Events: This period saw the beginning of peace negotiations between the Sudanese government and the Sudan People's Liberation Movement, leading to the Comprehensive Peace Agreement in 2005. This relative political stability may have contributed to improved agricultural conditions in some areas.

2015 - 2018

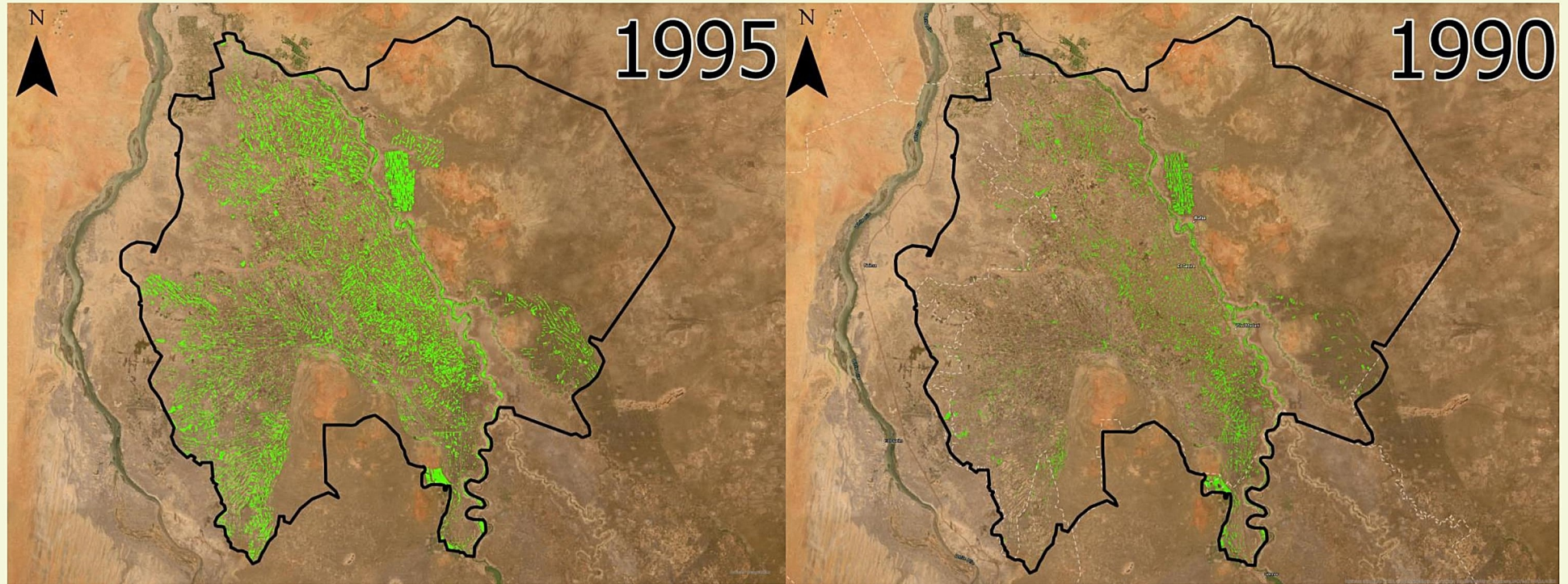


This period may be associated with new agricultural programs and government policies aimed at boosting agricultural production, as well as a relative improvement in climatic conditions following a previous drought. There was a potential improvement in rainfall patterns during this time, which contributed to an increase in cultivated areas.

2020 - 2024



This period faced several significant challenges, including an unstable transitional period, coups, climatic factors such as floods causing severe damage to crops, and finally, the war in Sudan in 2023.

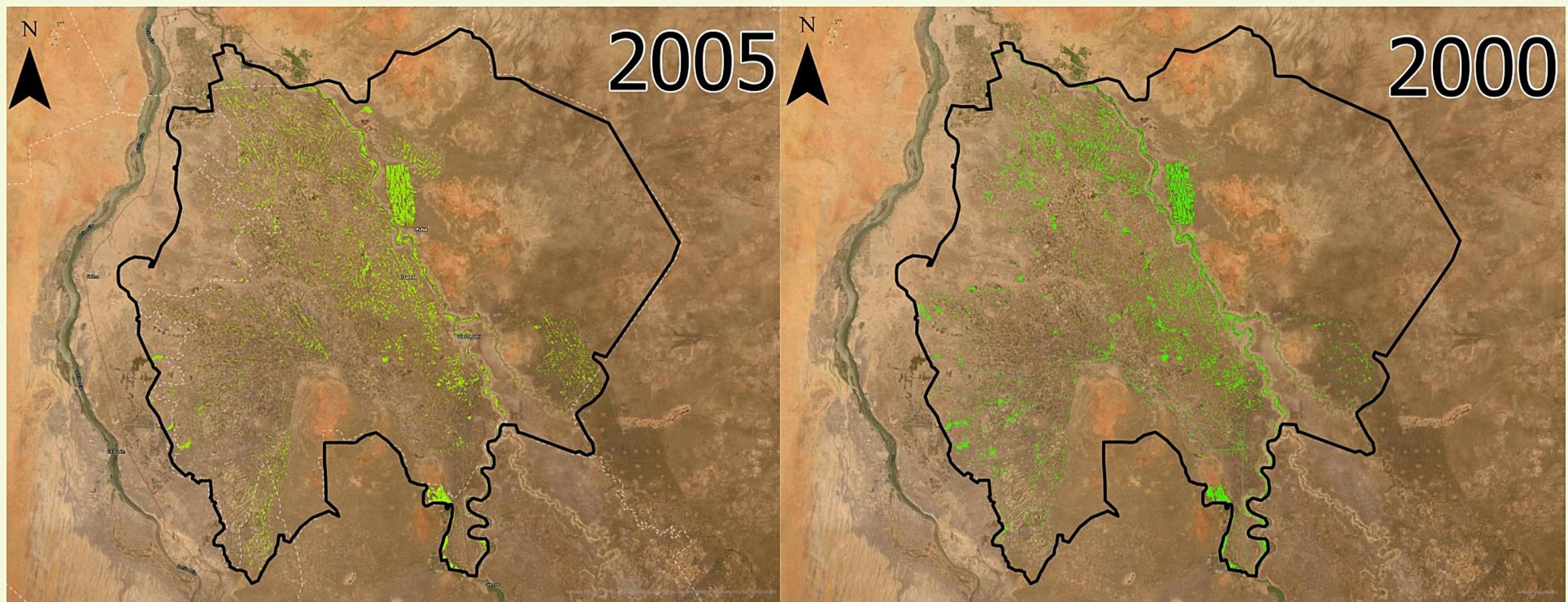


*Agricultural Production Areas in Al-Jazira over Time (in km<sup>2</sup>)*

Climatic Impact: This period was stable in terms of climate and did not experience severe droughts. Additionally, the population growth contributed to an increase in the number of cultivated areas.



**Cultivated  
Areas**

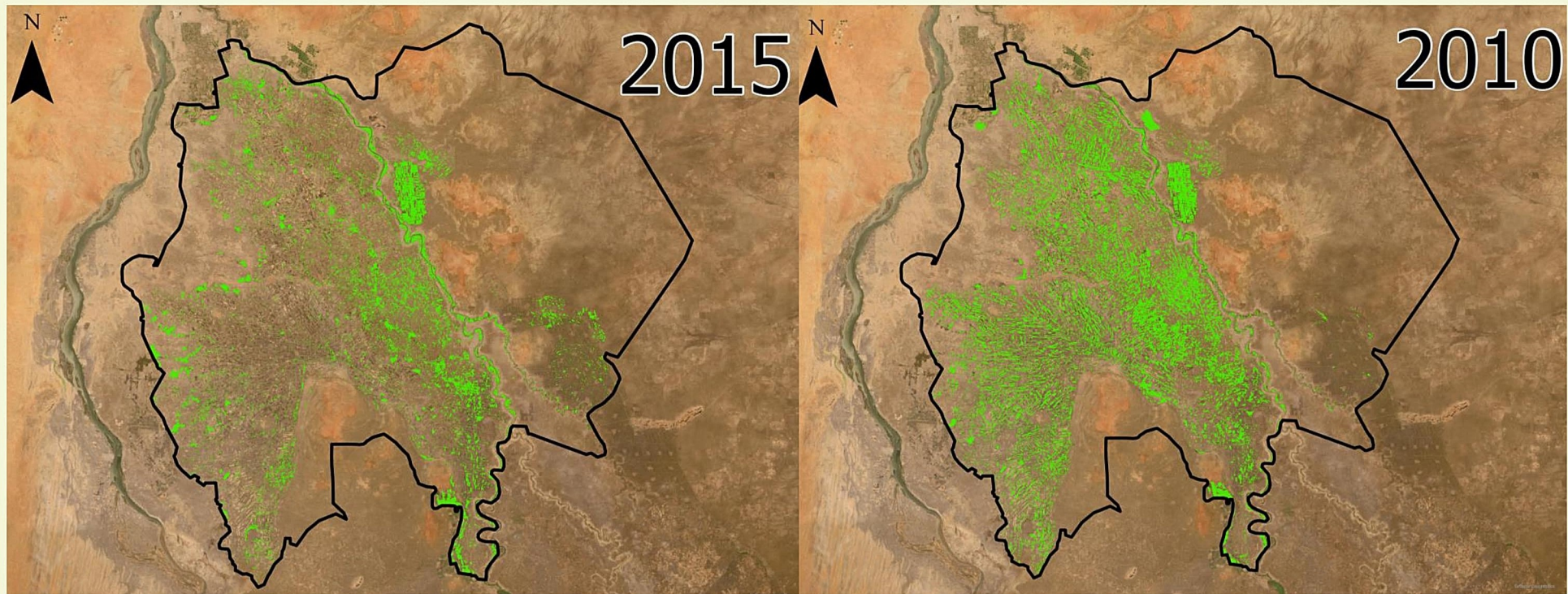


*Agricultural Production Areas in Al-Jazira over Time (in km<sup>2</sup>)*

There was a decline in the amount of agricultural land during this period from 1995, possibly due to the collapse of some existing agricultural projects and certain periods of drought.



Cultivated  
Areas

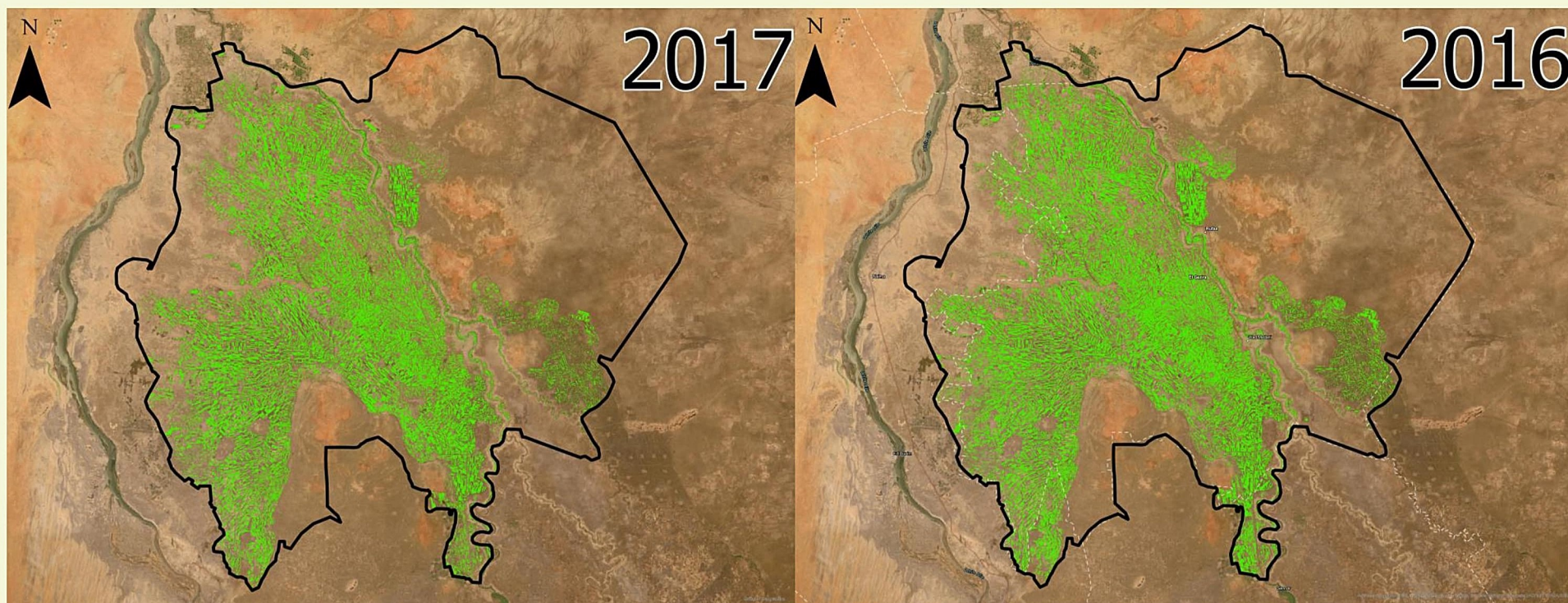


*Agricultural Production Areas in Al-Jazira over Time (in km<sup>2</sup>)*

There was an increase in 2010, followed by a decline in 2015, possibly due to climatic factors in 2015 (floods).



Cultivated  
Areas

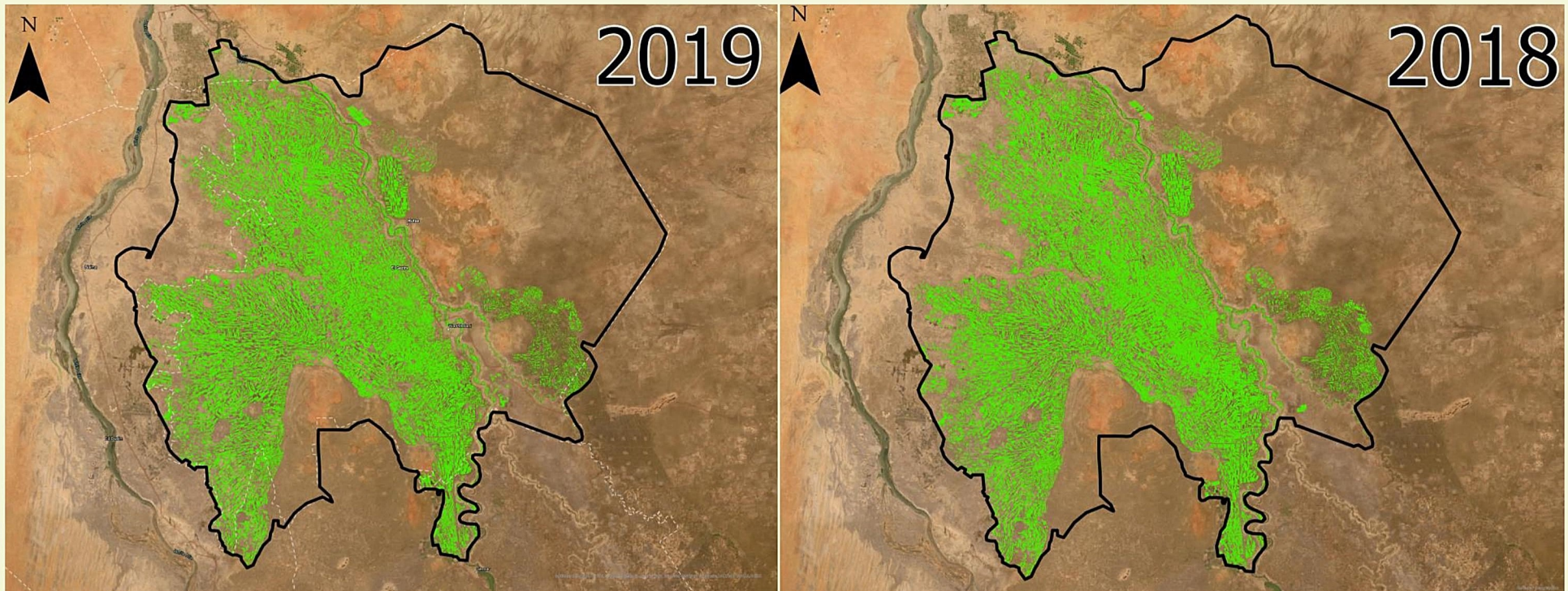


*Agricultural Production Areas in Al-Jazira over Time (in km<sup>2</sup>)*

A significant increase occurred during these years, possibly due to agricultural investment, the introduction of encouraging agricultural policies, and favorable climatic conditions. These factors may explain this change.



**Cultivated  
Areas**

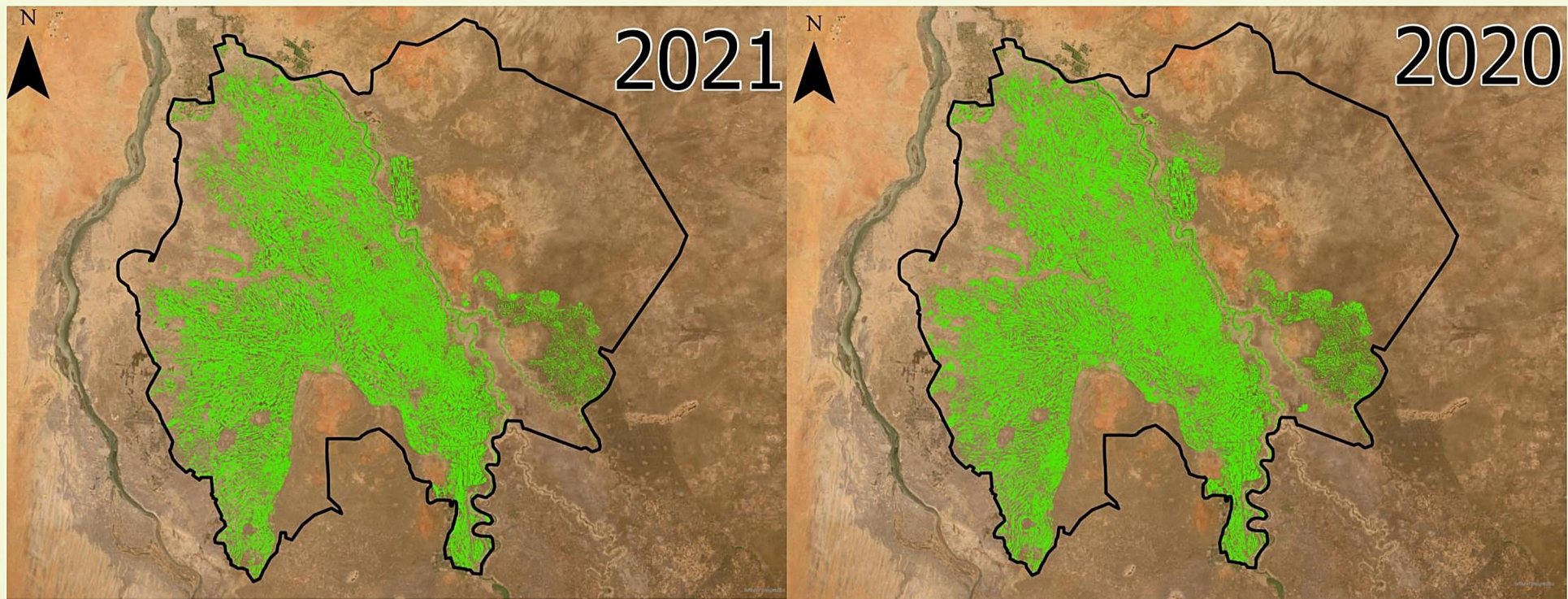


*Agricultural Production Areas in Al-Jazira over Time (in km<sup>2</sup>)*

The increase in cultivated areas continued during these years as well.



Cultivated  
Areas



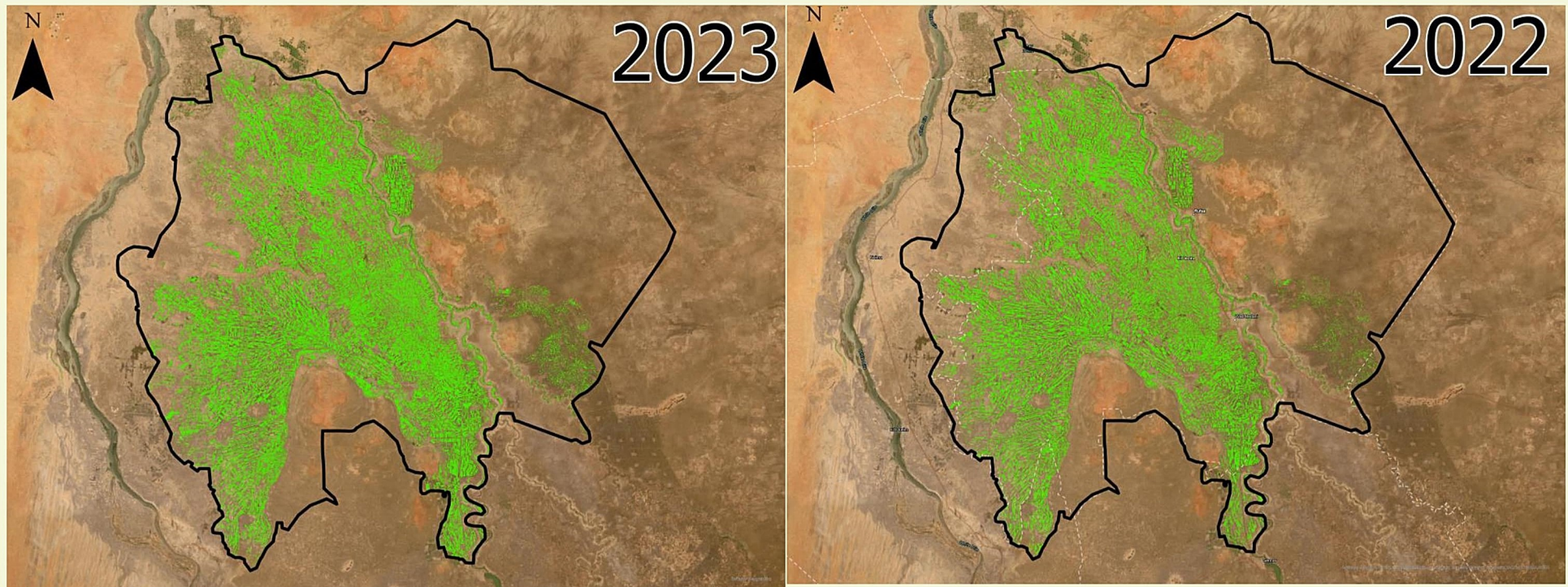
*Agricultural Production Areas in Al-Jazira over Time (in km<sup>2</sup>)*

Agricultural growth continued, reaching its peak in 2020 compared to other years.



Cultivated  
Areas



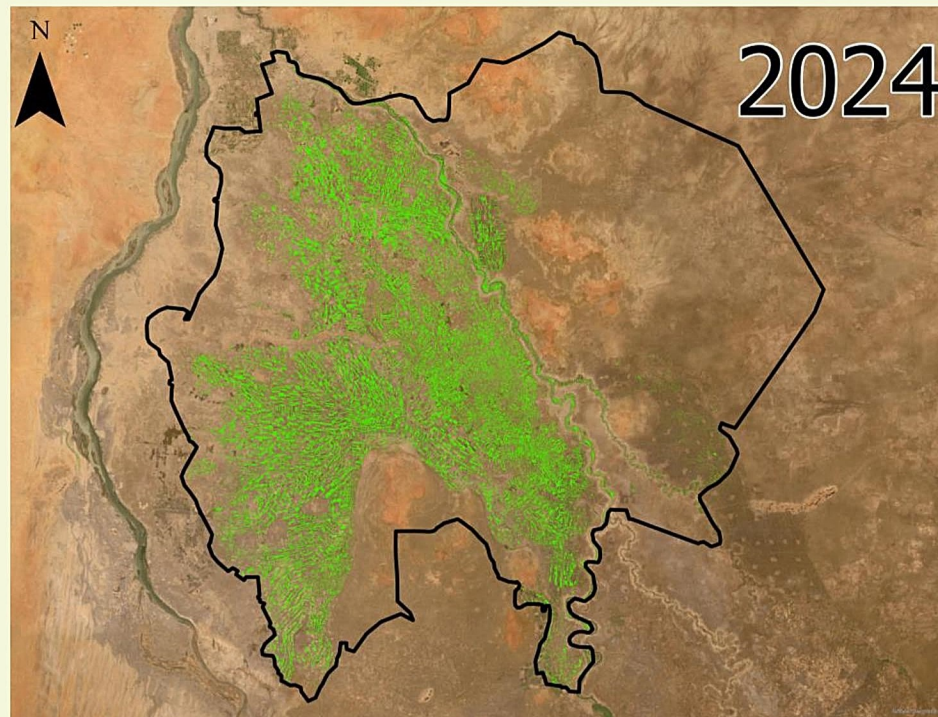


*Agricultural Production Areas in Al-Jazira over Time (in km<sup>2</sup>)*

A significant decline occurred from 2020 due to political instability and the disappearance of many previously cultivated areas.



Cultivated  
Areas



*Agricultural Production Areas in Al-Jazira over Time (in km<sup>2</sup>)*

The decline in cultivated areas continues, as many areas have been affected by the war. The cultivated areas this year are comparable to the levels seen in the 1990s.



**Cultivated  
Areas**